

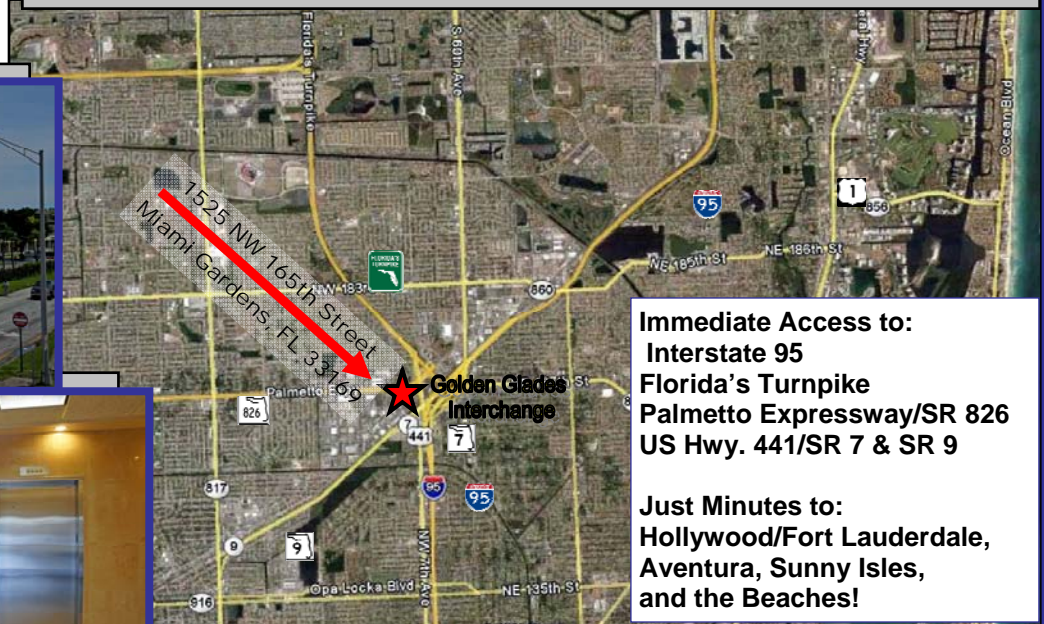


# Golden Glades Office Park

1525 NW 167th Street, Miami Gardens FL 33169  
 ± 695 - 1,996 Sq. Ft. Space for Lease  
 In a Beautiful 8-Building Office Park Setting

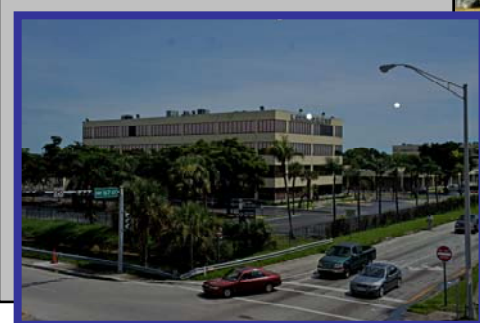
**From \$16.95 Per Square Foot, Full Service**

- ◆ ± 695 Available on 1st Floor
- ◆ ± 789, ± 1,864 & ± 1,996 SF Spaces Available on 4th Floor
- ◆ 24/7 Building Access
- ◆ Roaming Security Guard
- ◆ Gated Parking (5.5/1,000 Ratio)
- ◆ On-Site Restaurant & ATM
- ◆ Comcast High-Speed Cable Access Available For Phone & Data Lines
- ◆ Palmetto Expressway Frontage
- ◆ Convenient to All Major South Florida Markets
- ◆ Easy Access to Golden Glades Interchange Major Highways



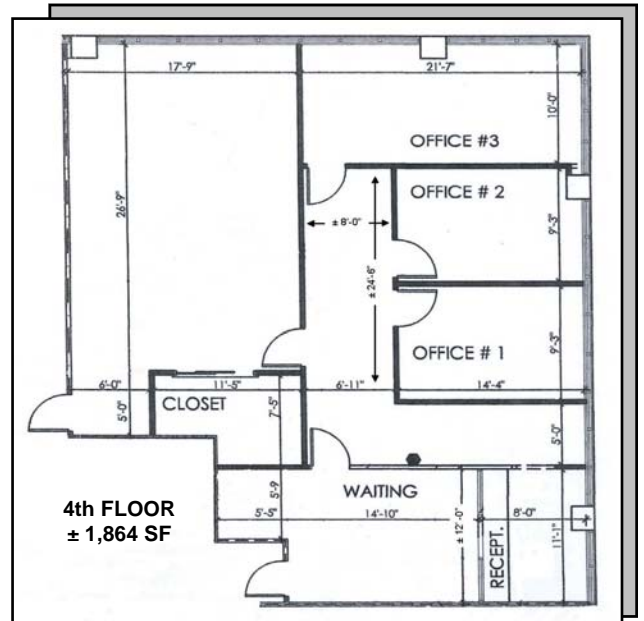
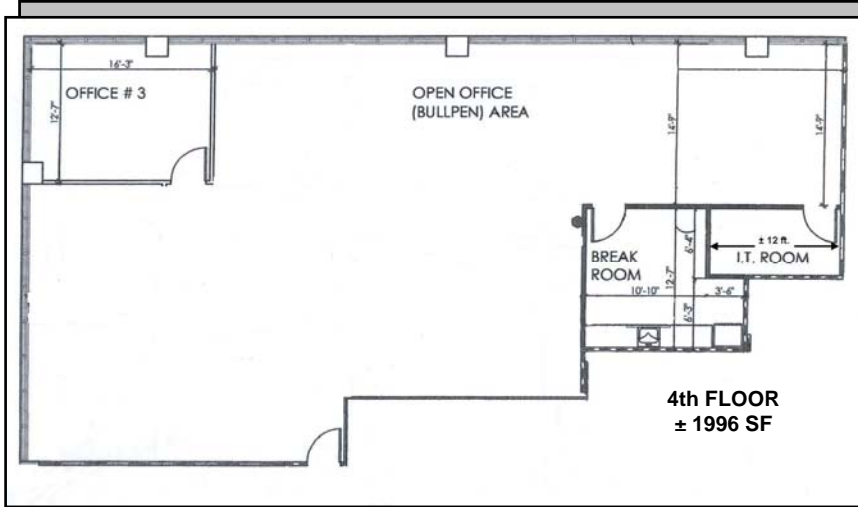
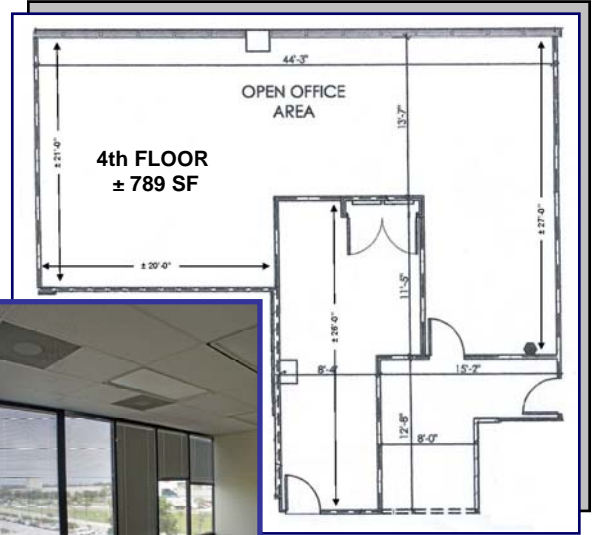
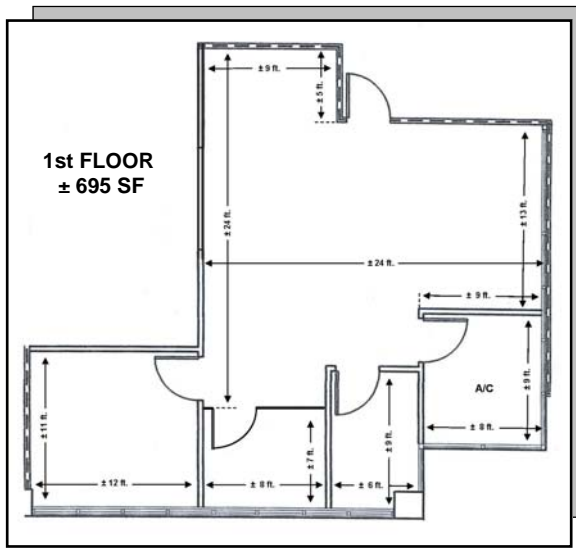
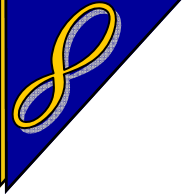
**Immediate Access to:**  
 Interstate 95  
 Florida's Turnpike  
 Palmetto Expressway/SR 826  
 US Hwy. 441/SR 7 & SR 9

**Just Minutes to:**  
 Hollywood/Fort Lauderdale,  
 Aventura, Sunny Isles,  
 and the Beaches!



**Exclusively Listed By:**  
**Infinity Commercial Real Estate**  
 Phone: 305-947-9514  
 Email: [admin@infinitycommercial.net](mailto:admin@infinitycommercial.net)  
 Websites: [www.infinitycommercial.net](http://www.infinitycommercial.net)  
[www.realcommercialproperties.com](http://www.realcommercialproperties.com)

# Space Plans



**Exclusively Listed By:**  
**Infinity Commercial Real Estate**  
 Phone: 305-947-9514  
 Email: [admin@infinitycommercial.net](mailto:admin@infinitycommercial.net)  
 Websites: [www.infinitycommercial.net](http://www.infinitycommercial.net)  
[www.realcommercialproperties.com](http://www.realcommercialproperties.com)

*This information is believed to be accurate, and has been obtained from sources deemed to be reliable. All information should be verified independently. The floor-plan above and herein is NOT to scale, and has not been verified for accuracy. We are not responsible for misstatements of facts, errors, omissions, prior lease, price change or withdrawal without notice.*